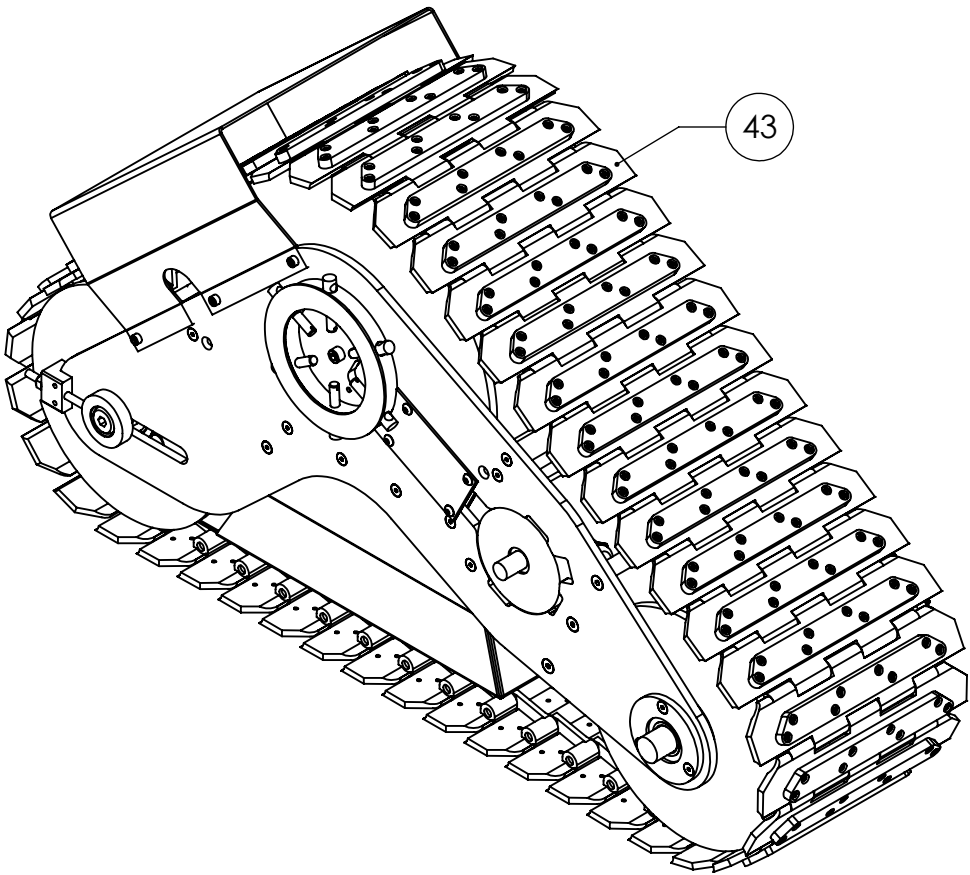
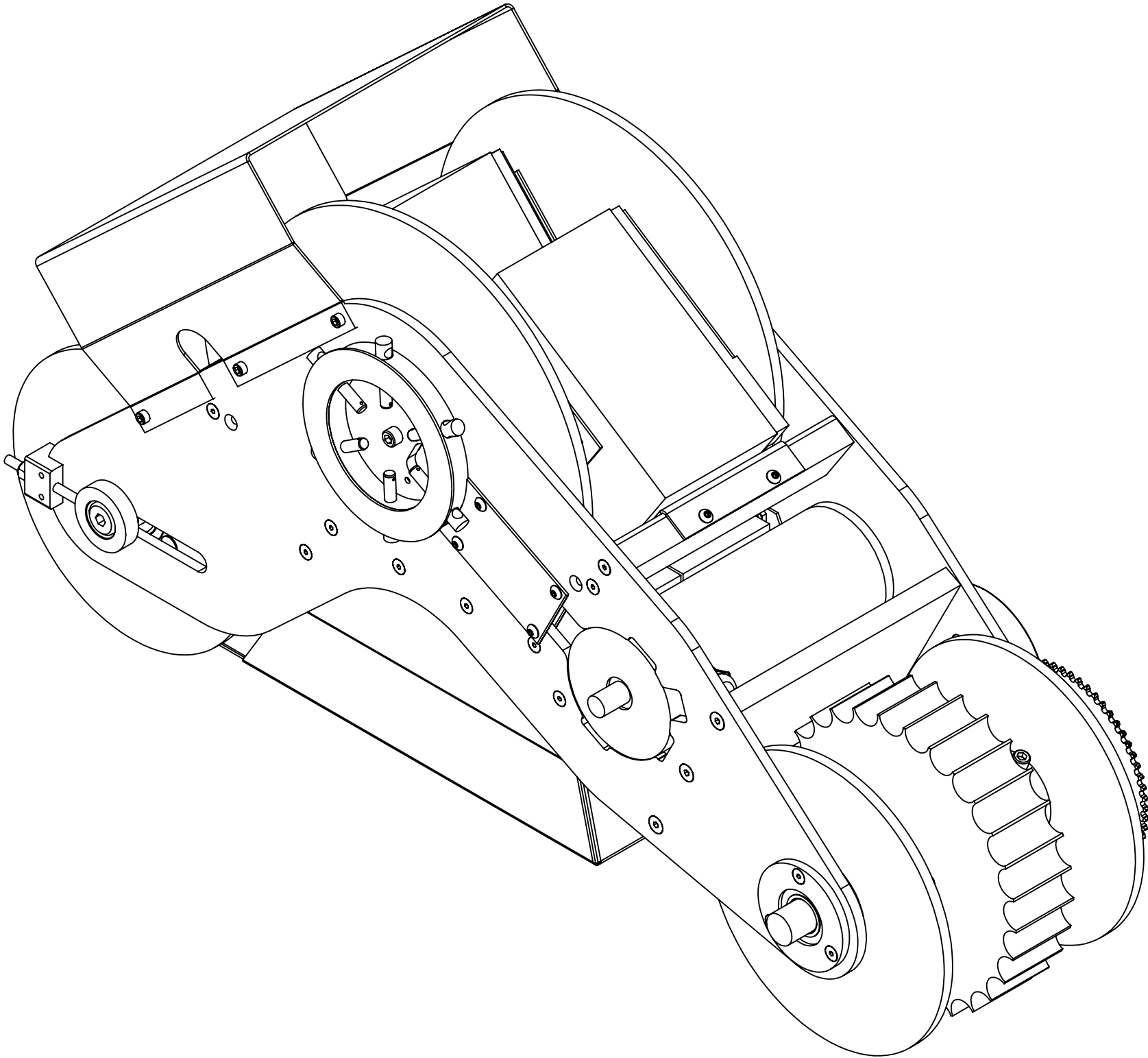


D

C

B

A



D

C

B

A

Drawn	Andrew Friedberg	28/10/2011
	Part Last Saved On	09/07/2012
	Drawing Last Saved On	15/05/2012
Approved		

INPUT-INC

The completed left track drive unit.

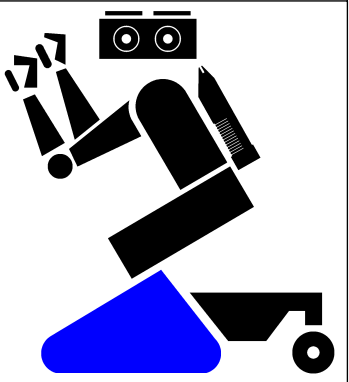
Material: Various

[TDRV-LEFT] Track Drive (Left)

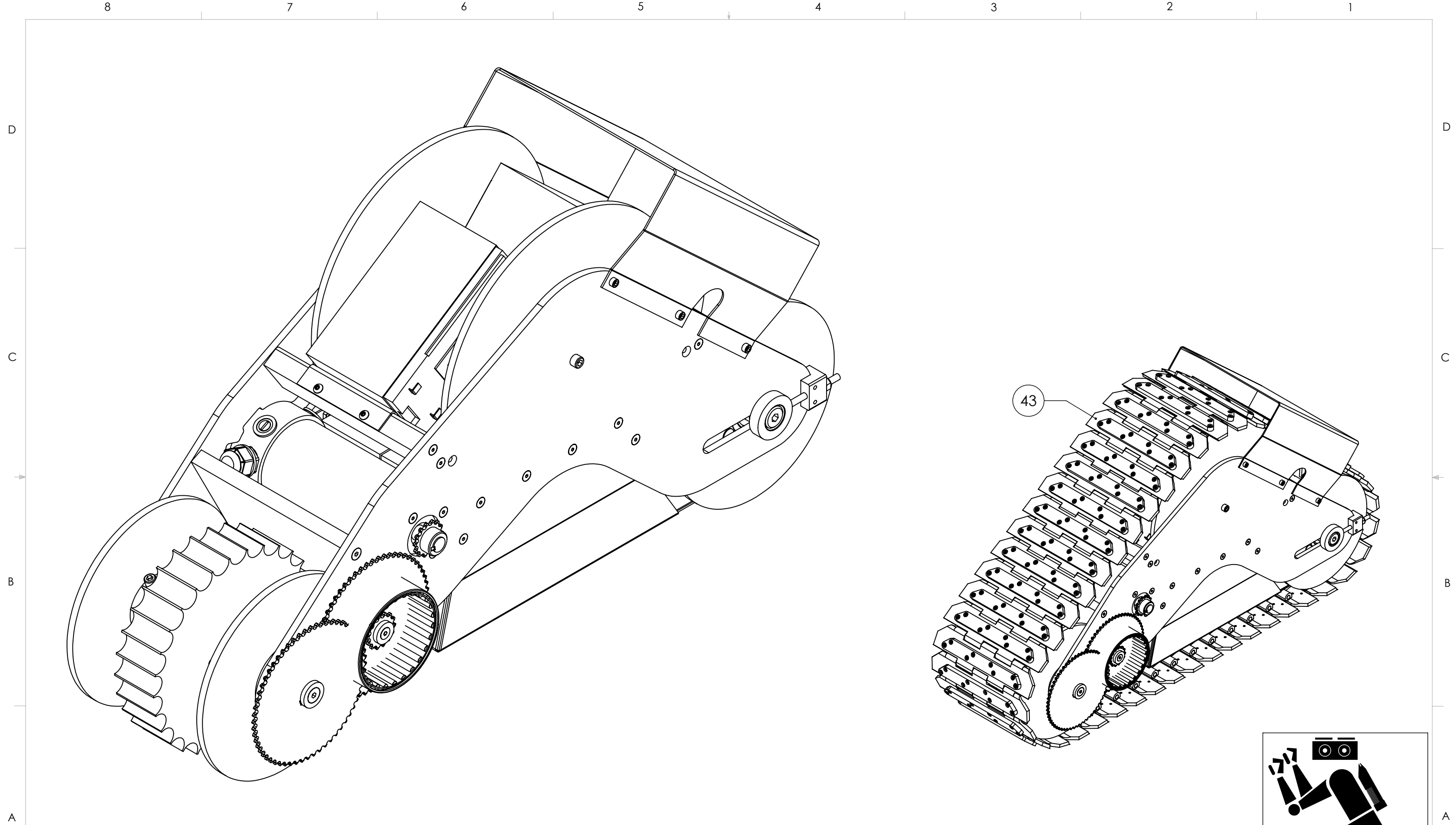
1 Required Per Robot

Dimensions in Inches

Sheet 1 of 20



Track Drive



Drawn	Andrew Friedberg	28/10/2011
Part Last Saved On		09/07/2012
Drawing Last Saved On		15/05/2012
Approved		

INPUT-INC

The completed left track drive unit.

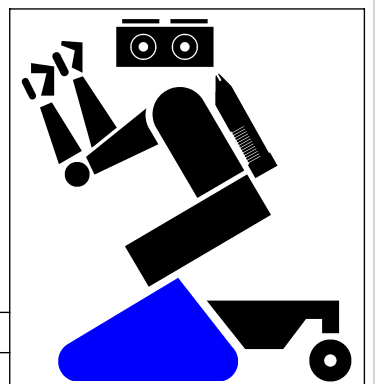
Material: Various

[TDRV-LEFT] Track Drive (Left)

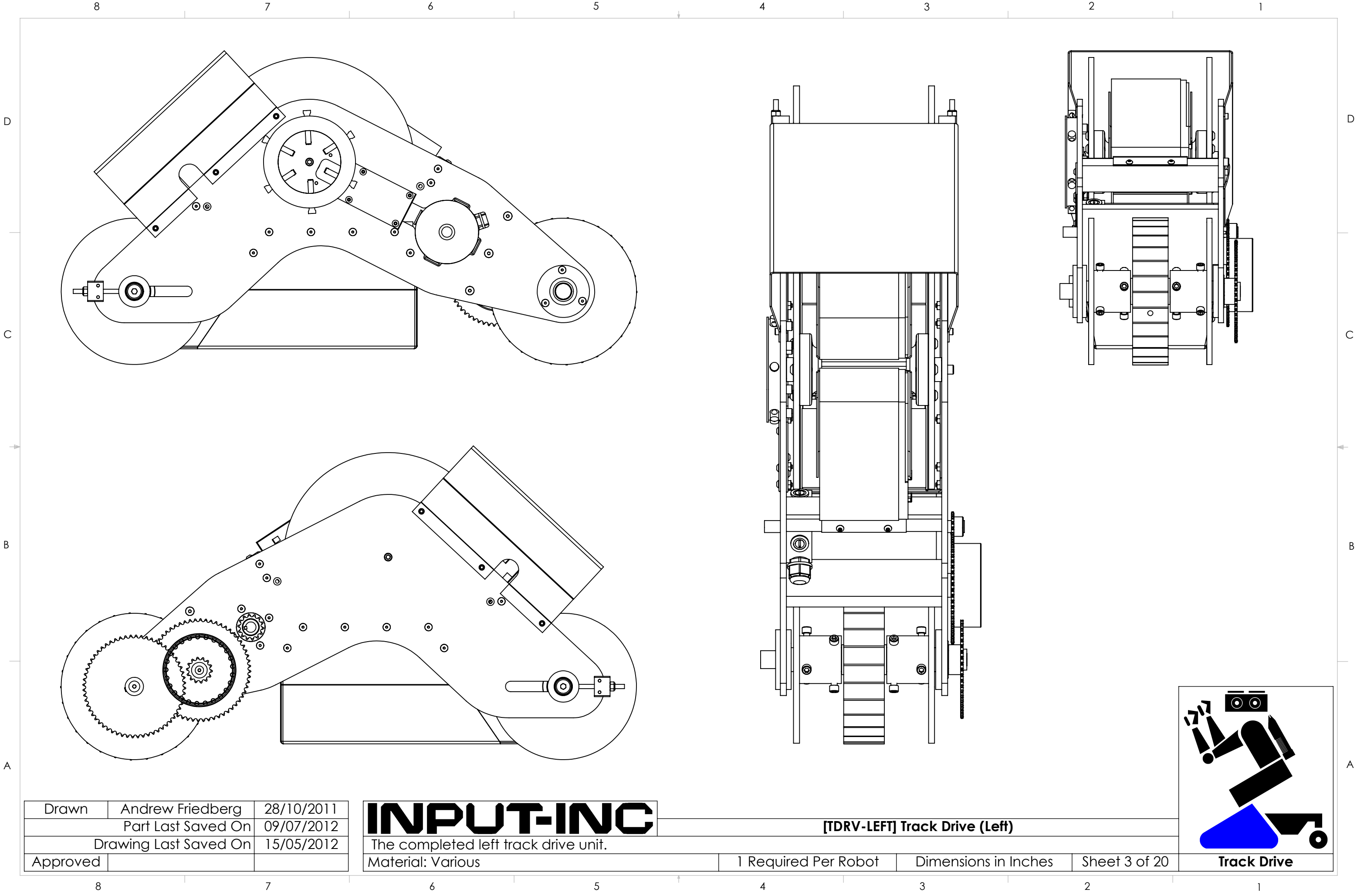
1 Required Per Robot

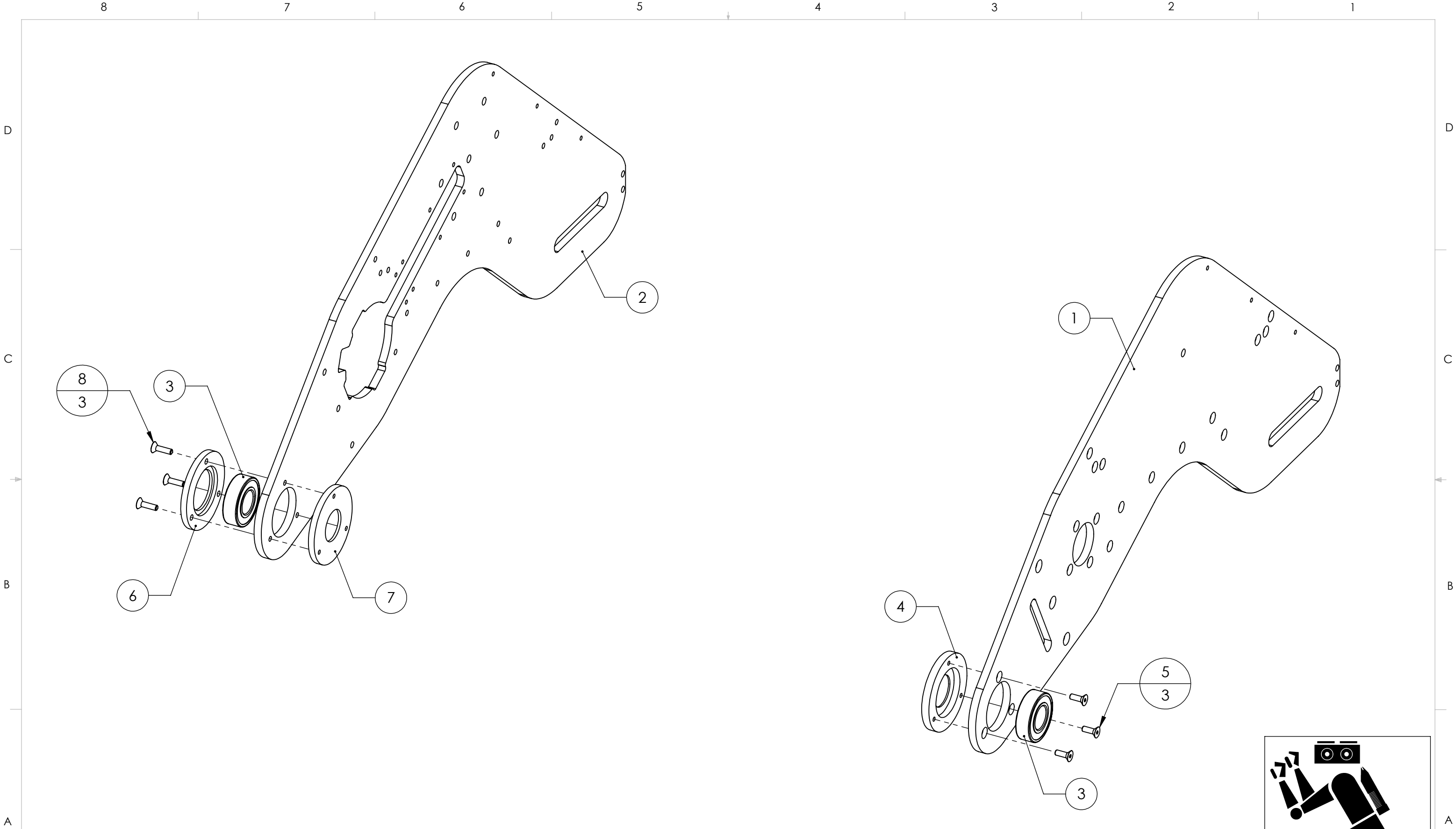
Dimensions in Inches

Sheet 2 of 20



Track Drive





Drawn	Andrew Friedberg	28/10/2011
	Part Last Saved On	09/07/2012
	Drawing Last Saved On	15/05/2012
Approved		

INPUT-INC

The completed left track drive unit.

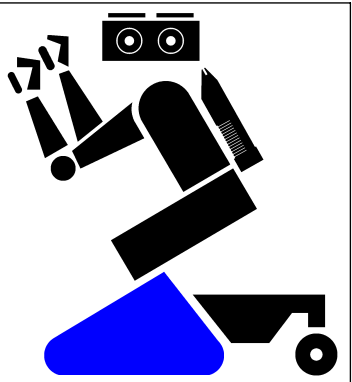
Material: Various

[TDRV-LEFT] Track Drive (Left)

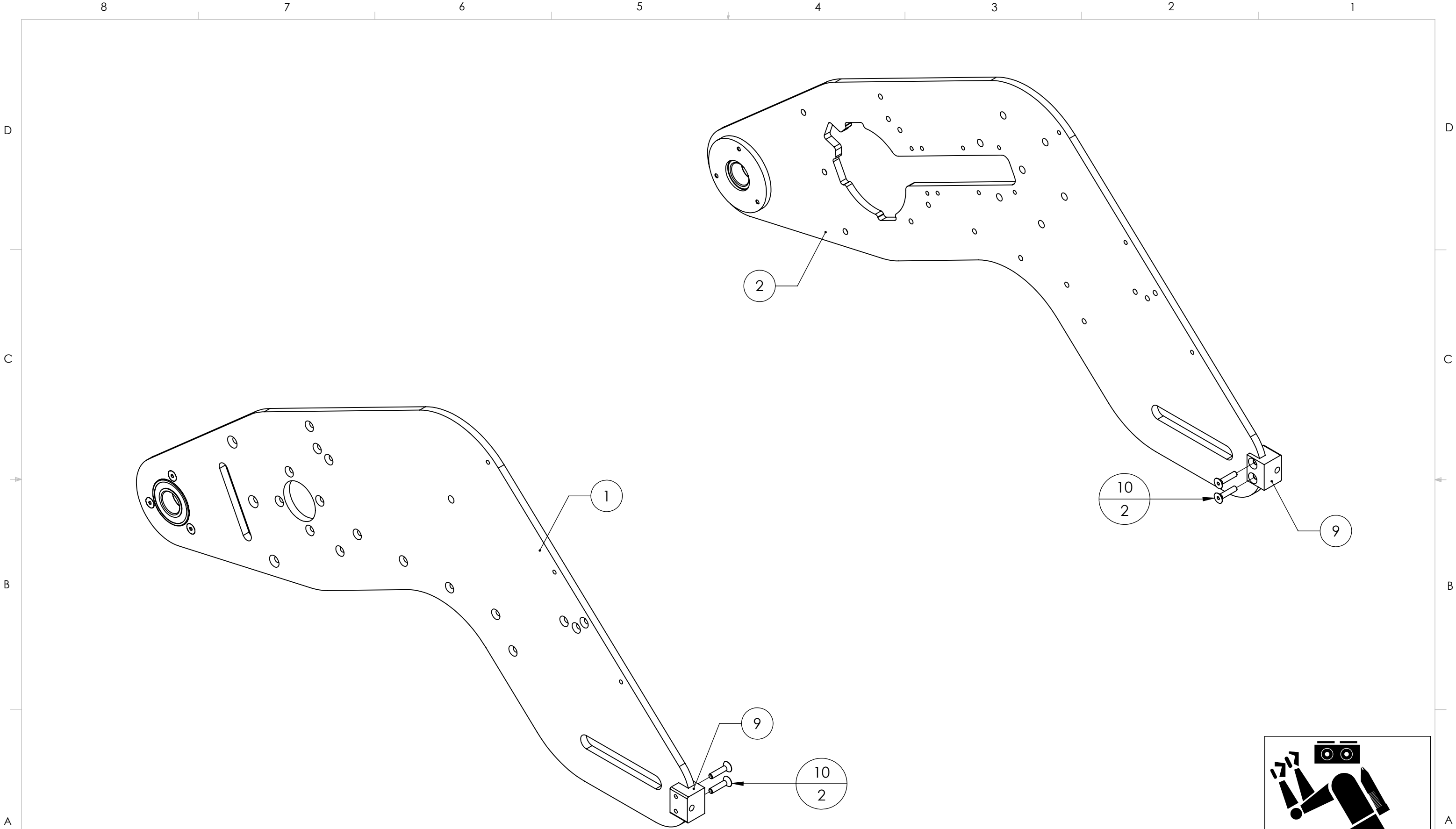
1 Required Per Robot

Dimensions in Inches

Sheet 4 of 20



Track Drive



Drawn	Andrew Friedberg	28/10/2011
	Part Last Saved On	09/07/2012
	Drawing Last Saved On	15/05/2012
Approved		

INPUT-INC

The completed left track drive unit.

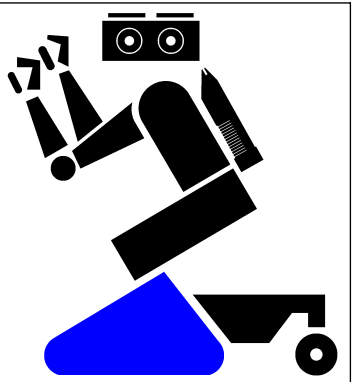
Material: Various

[TDRV-LEFT] Track Drive (Left)

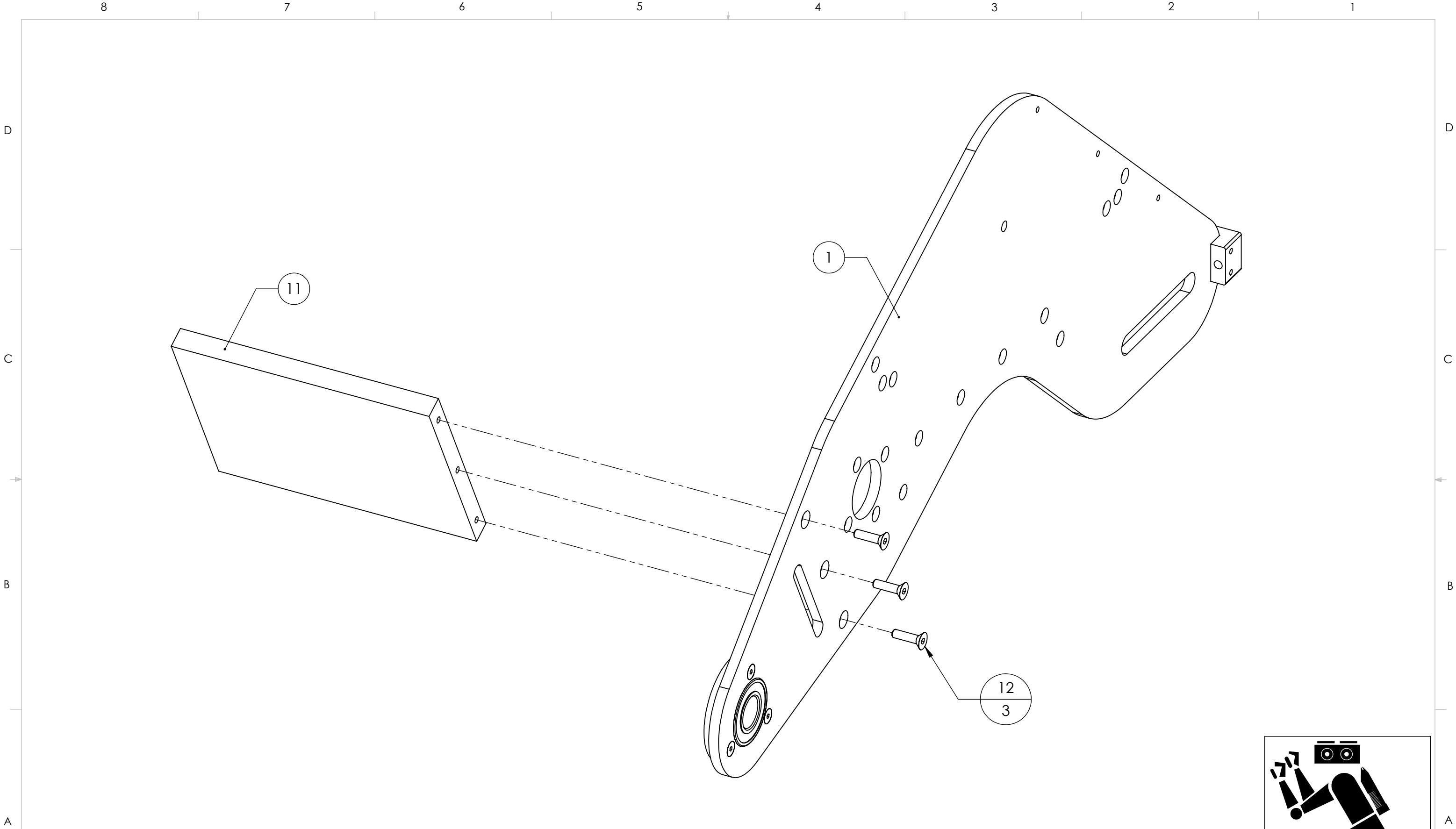
1 Required Per Robot

Dimensions in Inches

Sheet 5 of 20



Track Drive



Drawn	Andrew Friedberg	28/10/2011
Part Last Saved On		09/07/2012
Drawing Last Saved On		15/05/2012
Approved		

INPUT-INC

The completed left track drive unit.

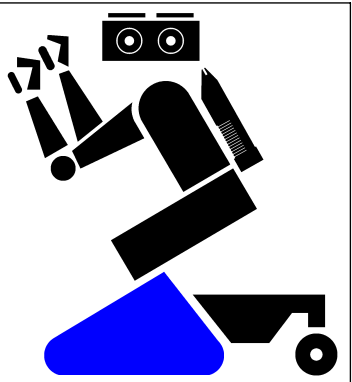
Material: Various

[TDRV-LEFT] Track Drive (Left)

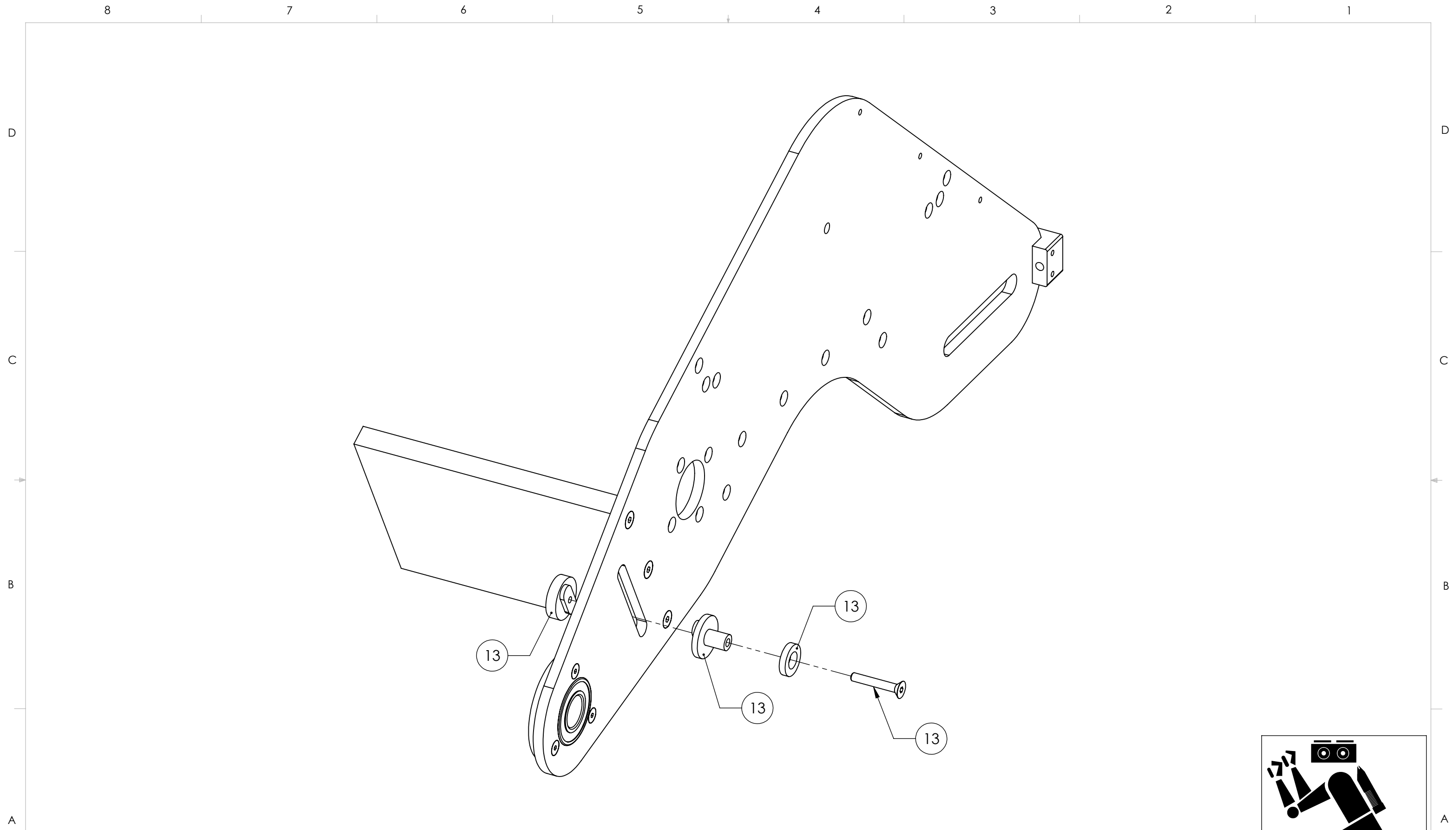
1 Required Per Robot

Dimensions in Inches

Sheet 6 of 20



Track Drive



Drawn	Andrew Friedberg	28/10/2011
	Part Last Saved On	09/07/2012
	Drawing Last Saved On	15/05/2012
Approved		

INPUT-INC

The completed left track drive unit.

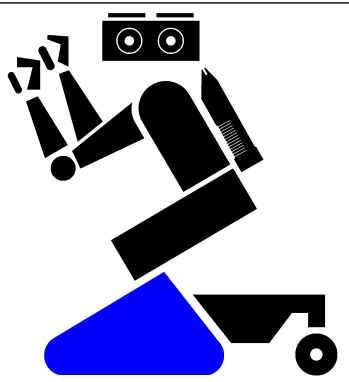
Material: Various

[TDRV-LEFT] Track Drive (Left)

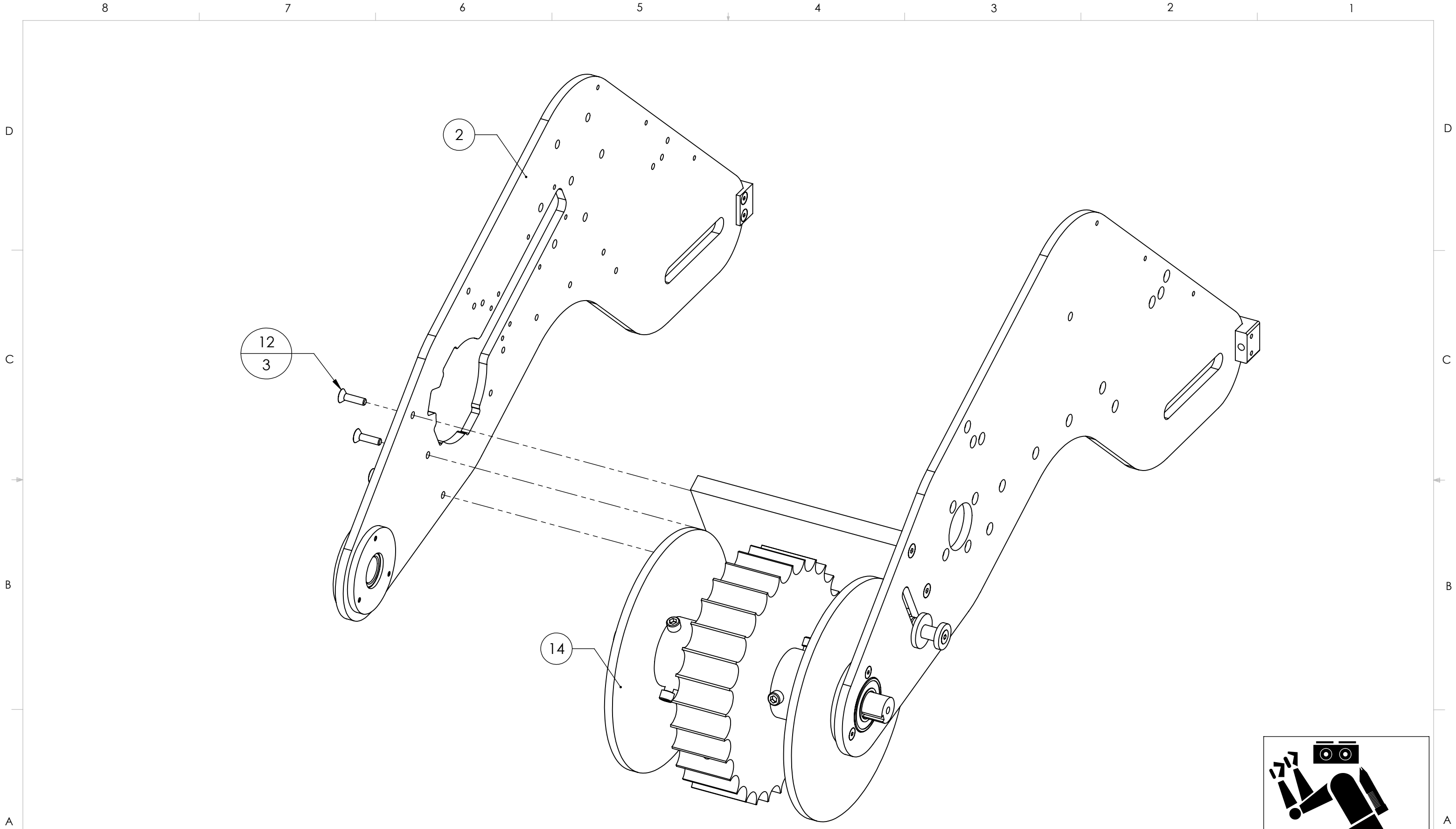
1 Required Per Robot

Dimensions in Inches

Sheet 7 of 20



Track Drive



Drawn	Andrew Friedberg	28/10/2011
	Part Last Saved On	09/07/2012
	Drawing Last Saved On	15/05/2012
Approved		

INPUT-INC

The completed left track drive unit.

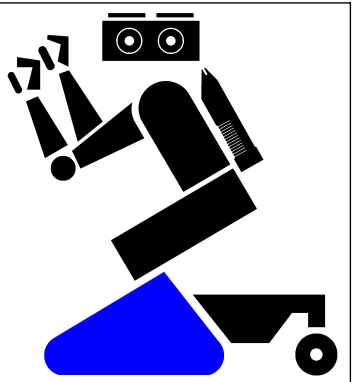
Material: Various

[TDRV-LEFT] Track Drive (Left)

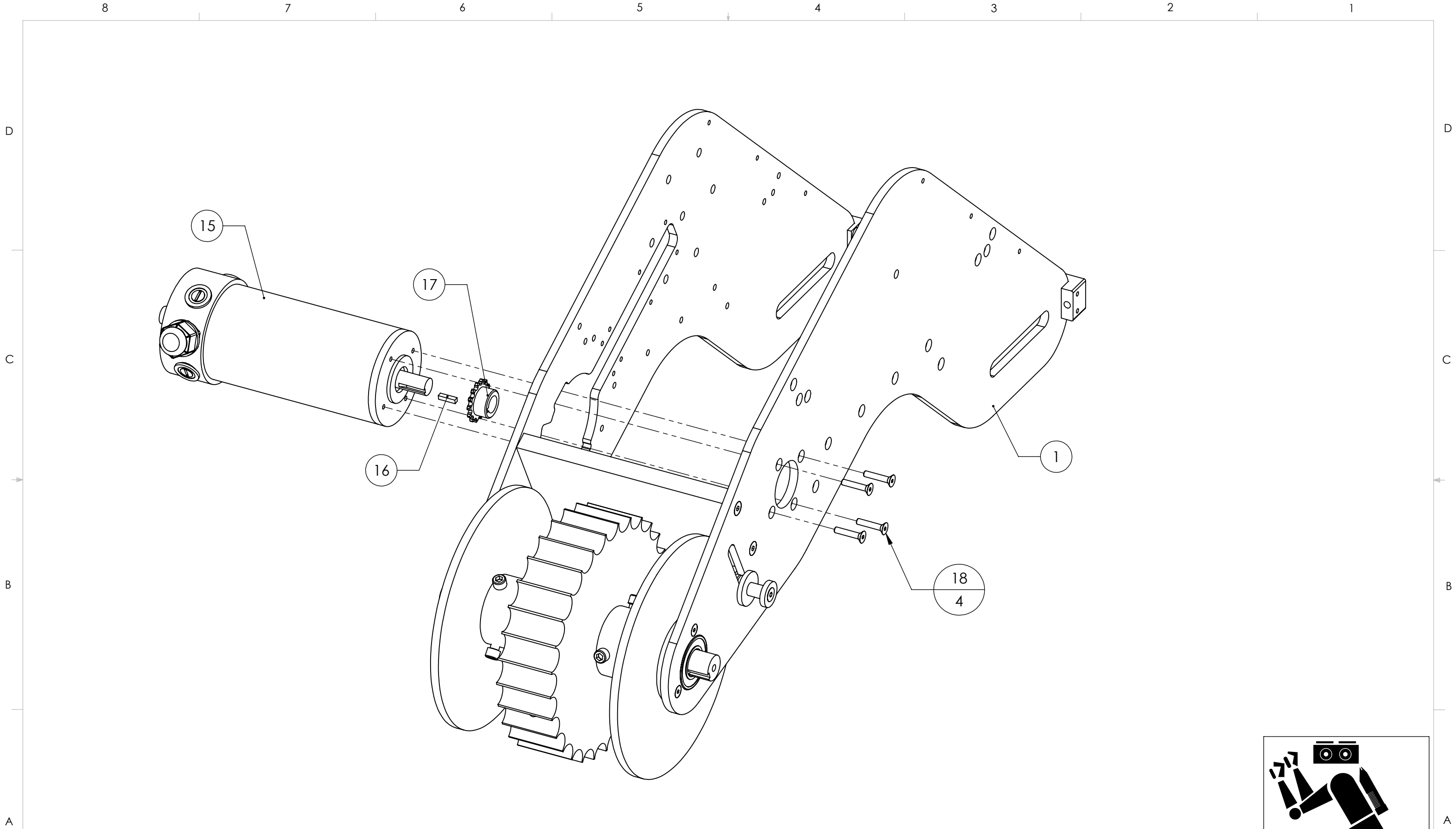
1 Required Per Robot

Dimensions in Inches

Sheet 8 of 20



Track Drive



Drawn	Andrew Friedberg	28/10/2011
	Part Last Saved On	09/07/2012
	Drawing Last Saved On	15/05/2012
Approved		

INPUT-INC

The completed left track drive unit.

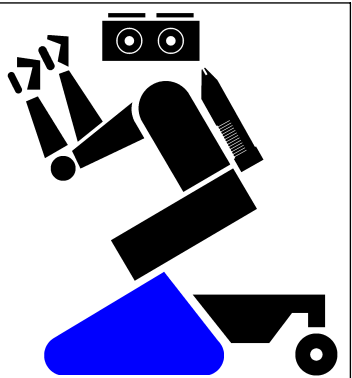
Material: Various

[TDRV-LEFT] Track Drive (Left)

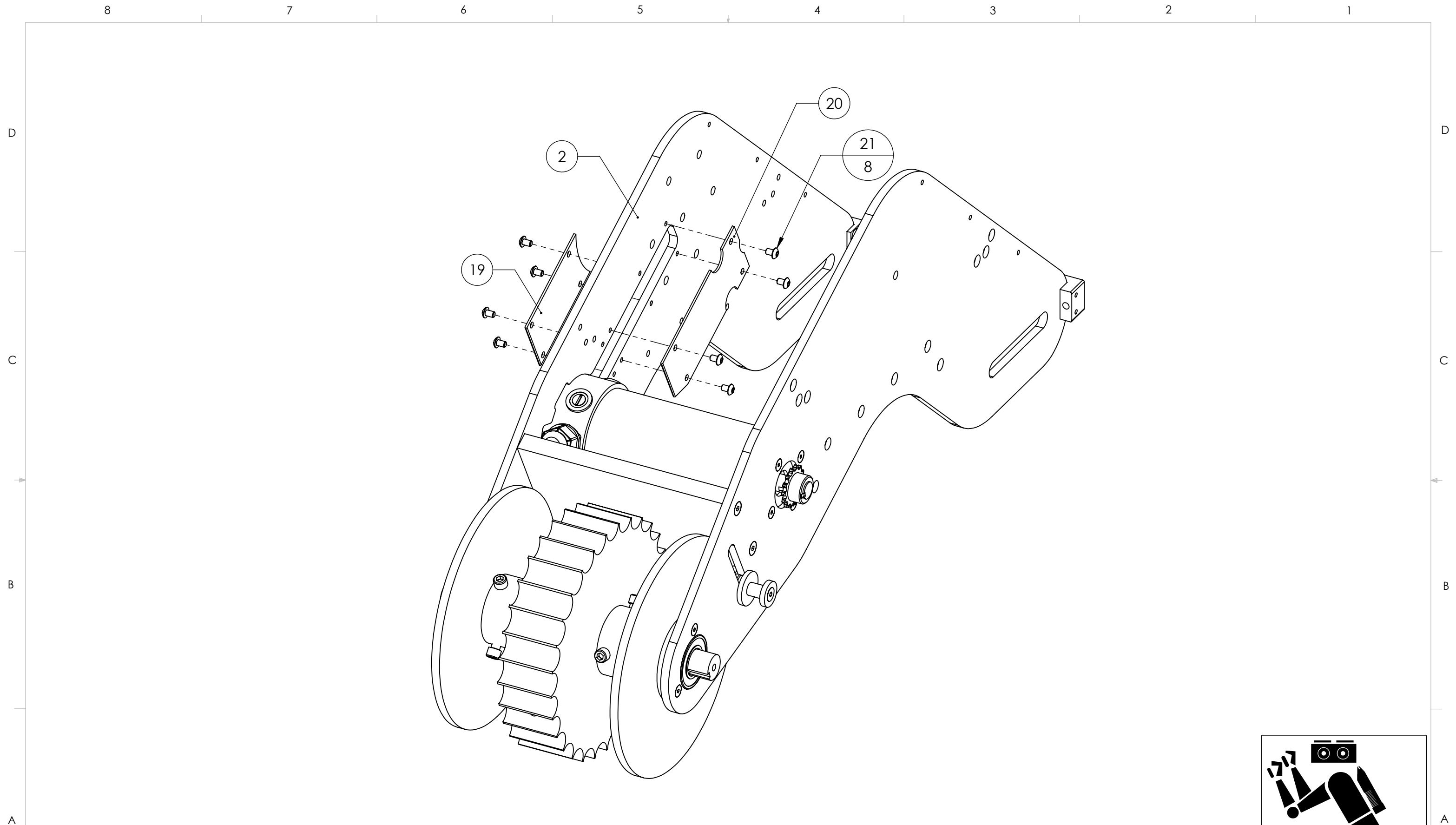
1 Required Per Robot

Dimensions in Inches

Sheet 9 of 20



Track Drive



Drawn	Andrew Friedberg	28/10/2011
	Part Last Saved On	09/07/2012
	Drawing Last Saved On	15/05/2012
Approved		

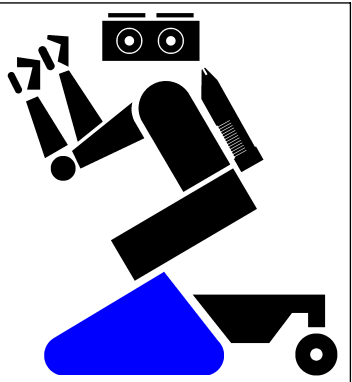
INPUT-INC

The completed left track drive unit.

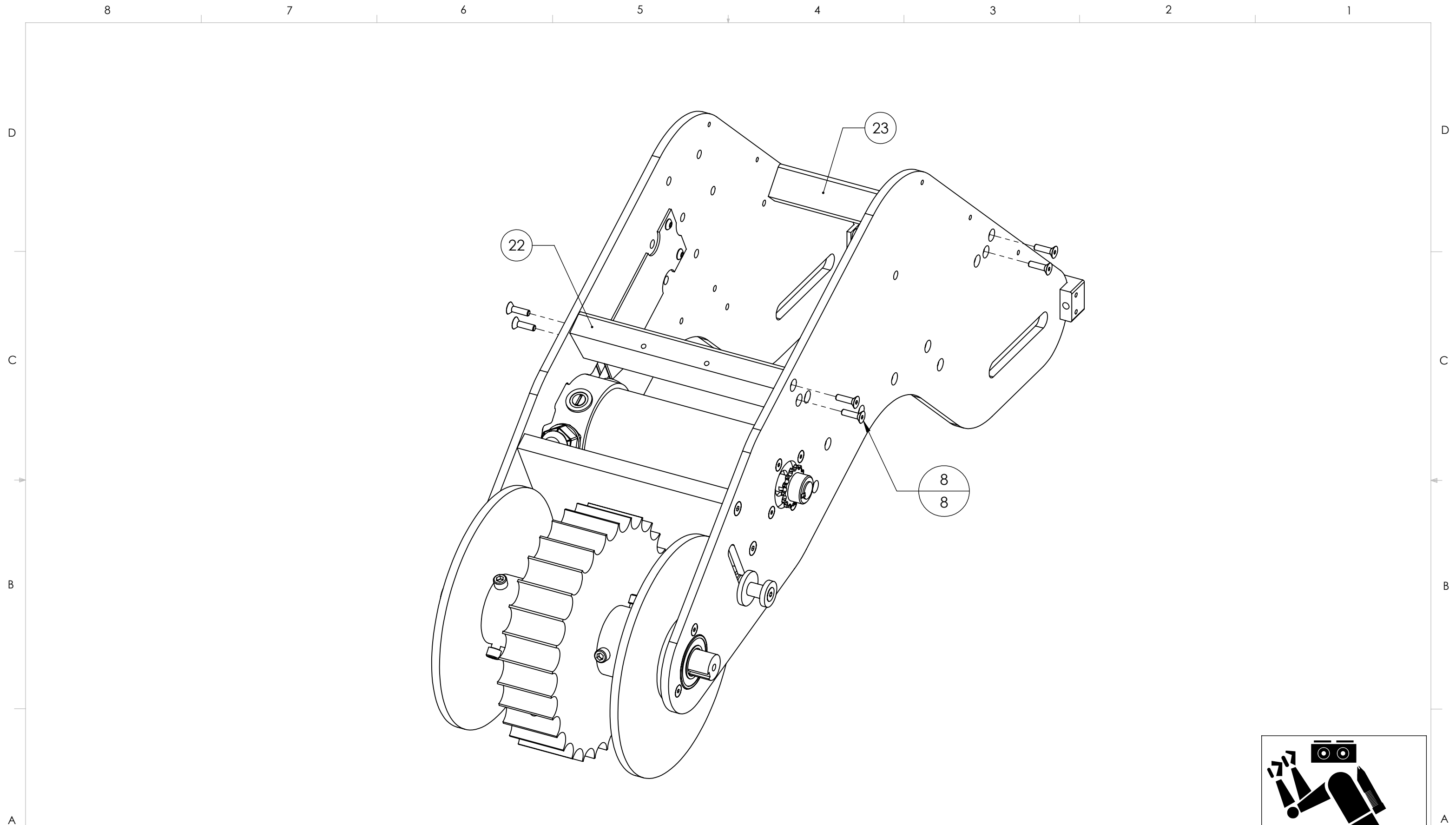
Material: Various

[TDRV-LEFT] Track Drive (Left)

1 Required Per Robot	Dimensions in Inches	Sheet 10 of 20
----------------------	----------------------	----------------



Track Drive



Drawn	Andrew Friedberg	28/10/2011
	Part Last Saved On	09/07/2012
	Drawing Last Saved On	15/05/2012
Approved		

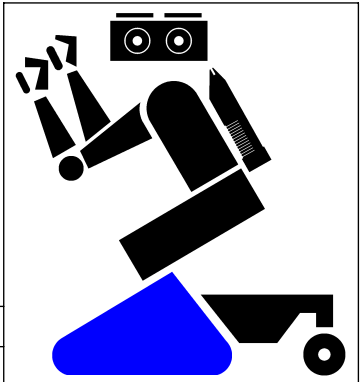
INPUT-INC

The completed left track drive unit.

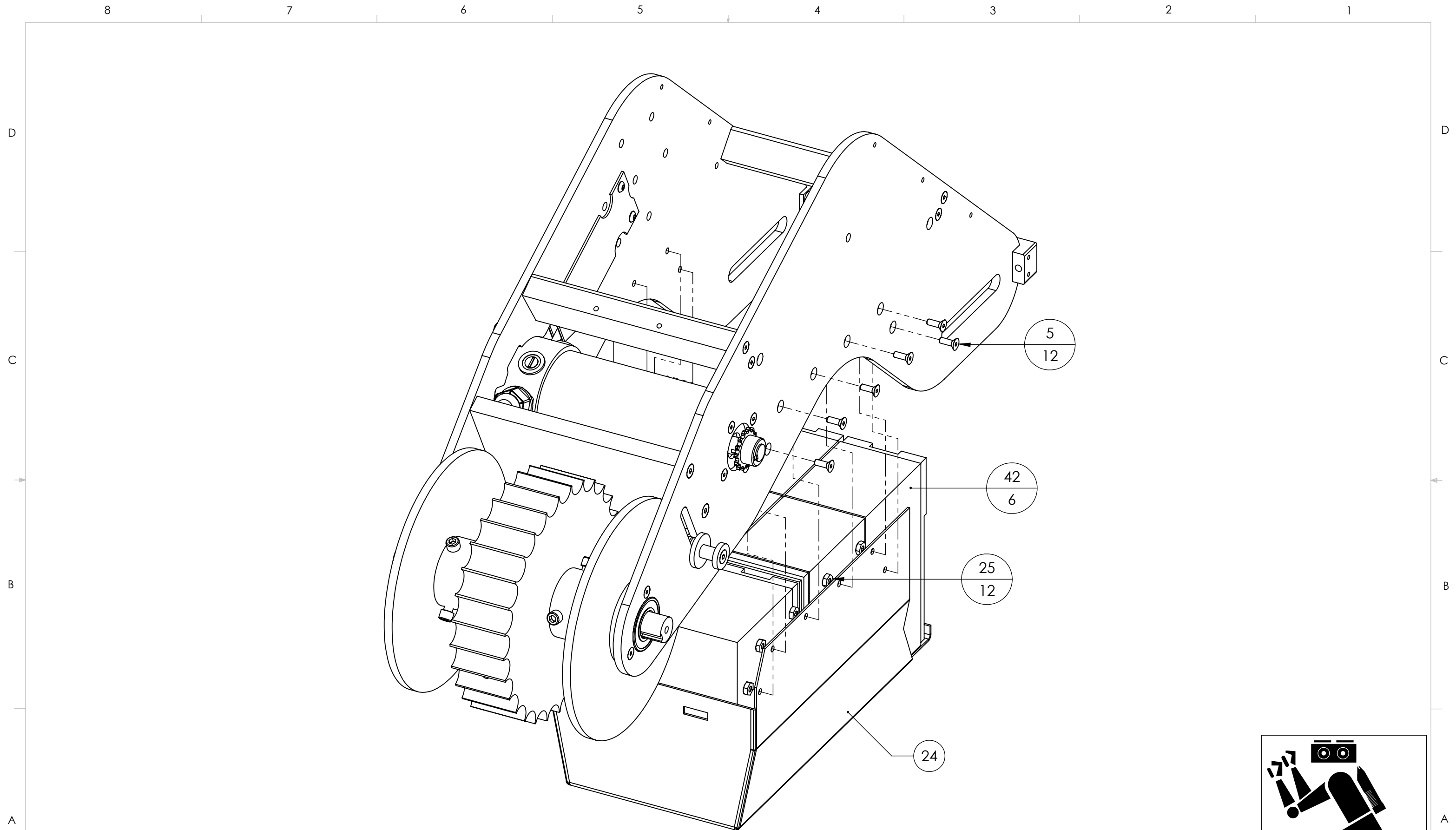
Material: Various

[TDRV-LEFT] Track Drive (Left)

1 Required Per Robot	Dimensions in Inches	Sheet 11 of 20
----------------------	----------------------	----------------



Track Drive



Drawn	Andrew Friedberg	28/10/2011
	Part Last Saved On	09/07/2012
	Drawing Last Saved On	15/05/2012
Approved		

INPUT-INC

The completed left track drive unit.

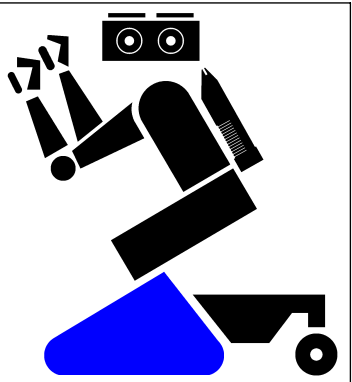
Material: Various

[TDRV-LEFT] Track Drive (Left)

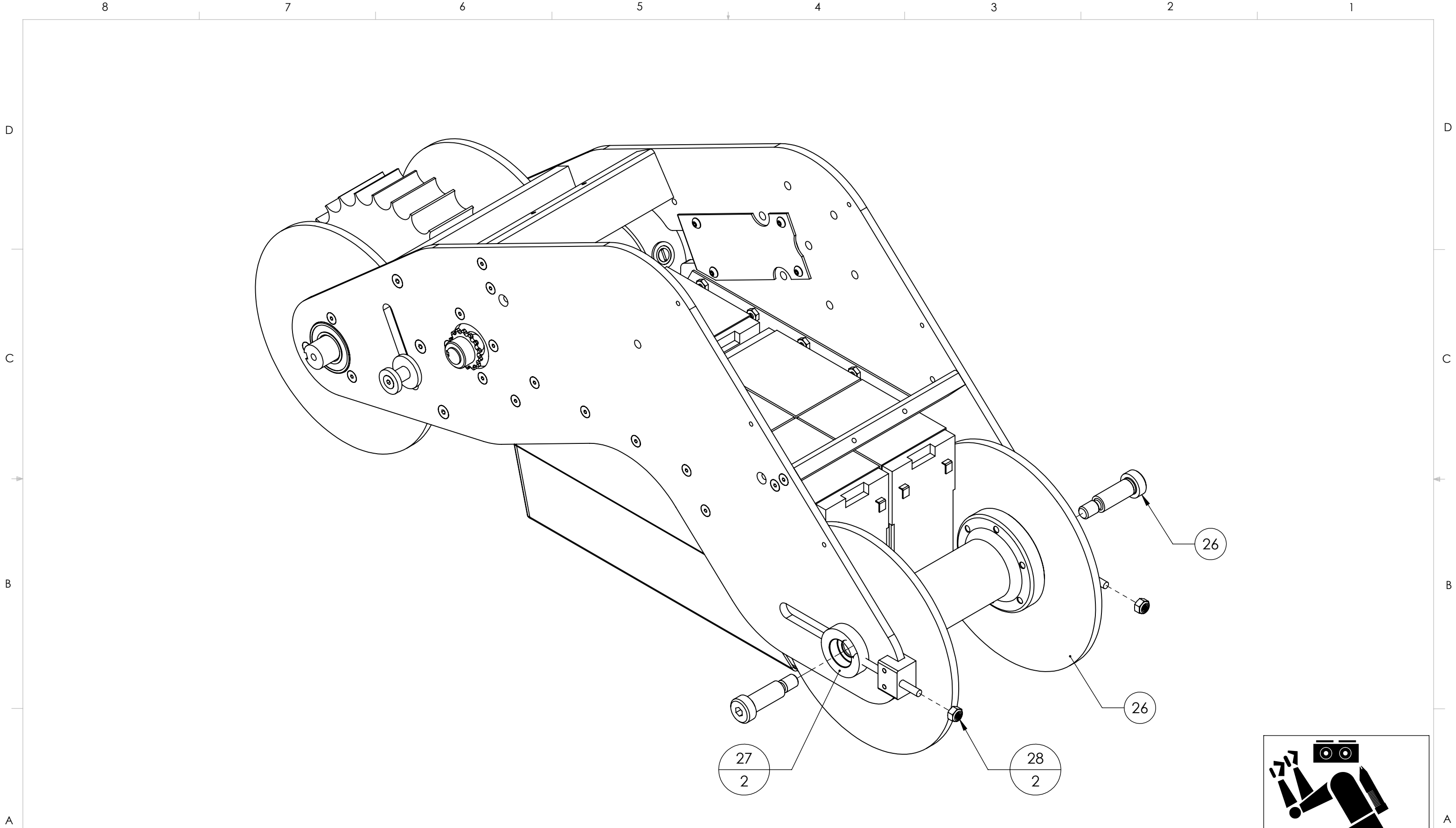
1 Required Per Robot

Dimensions in Inches

Sheet 12 of 20



Track Drive



Drawn	Andrew Friedberg	28/10/2011
	Part Last Saved On	09/07/2012
	Drawing Last Saved On	15/05/2012
Approved		

INPUT-INC

The completed left track drive unit.

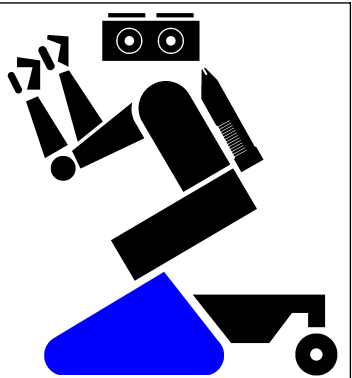
Material: Various

[TDRV-LEFT] Track Drive (Left)

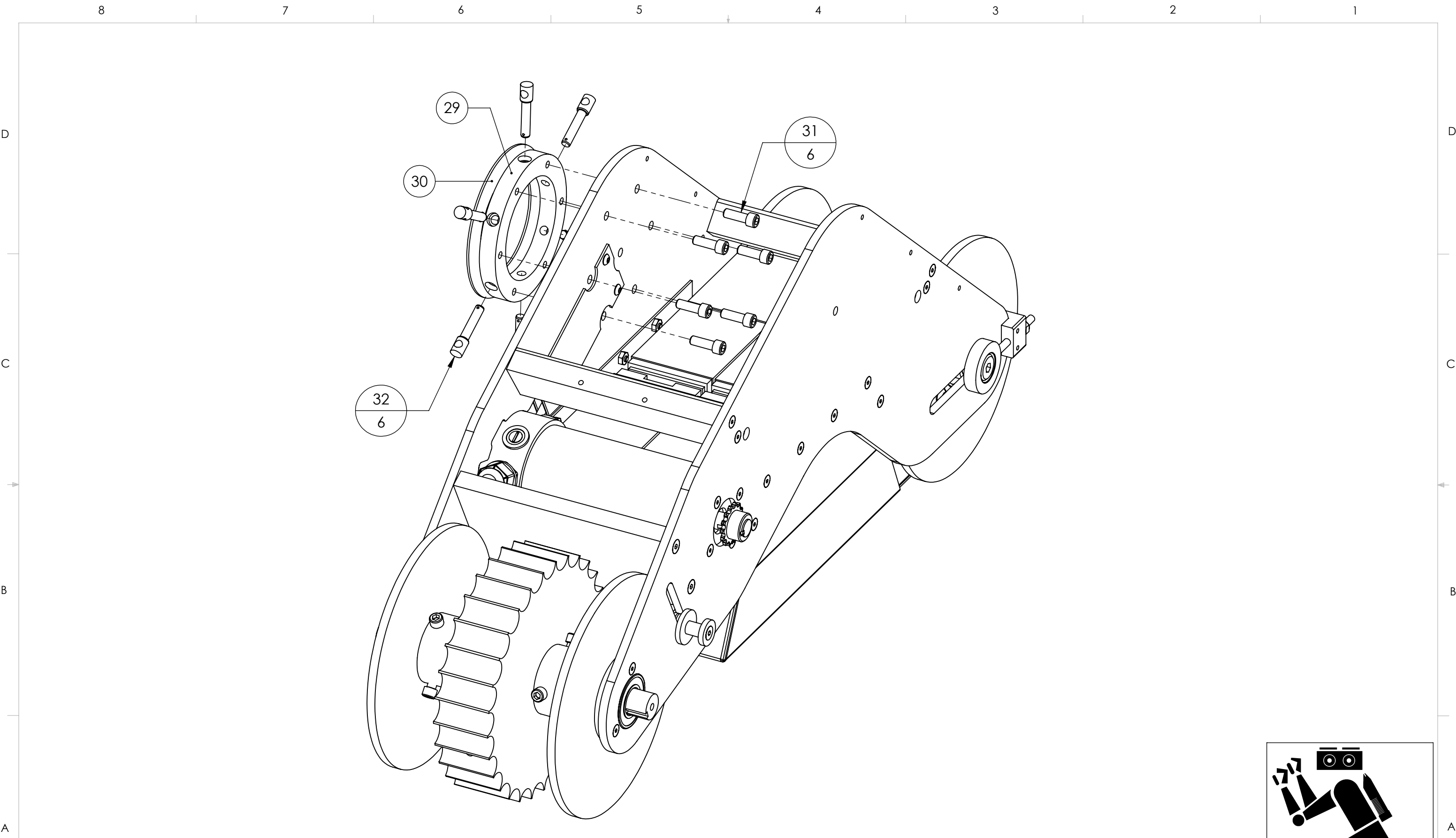
1 Required Per Robot

Dimensions in Inches

Sheet 13 of 20



Track Drive



Drawn	Andrew Friedberg	28/10/2011
	Part Last Saved On	09/07/2012
	Drawing Last Saved On	15/05/2012
Approved		

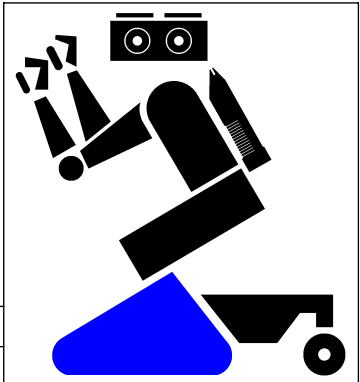
INPUT-INC

The completed left track drive unit.

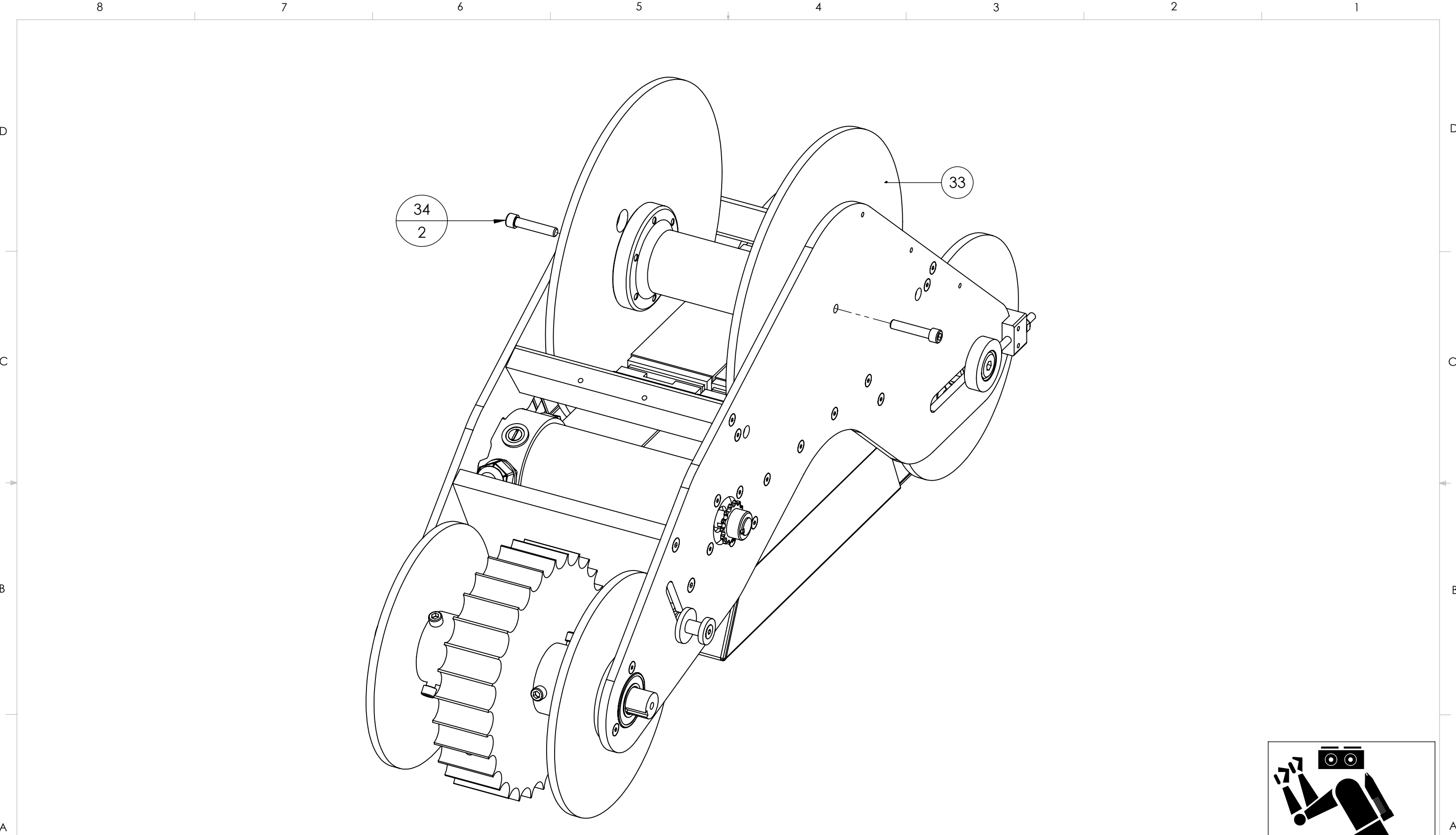
Material: Various

[TDRV-LEFT] Track Drive (Left)

1 Required Per Robot	Dimensions in Inches	Sheet 14 of 20
----------------------	----------------------	----------------



Track Drive



Drawn	Andrew Friedberg	28/10/2011
	Part Last Saved On	09/07/2012
	Drawing Last Saved On	15/05/2012
Approved		

INPUT-INC

The completed left track drive unit.

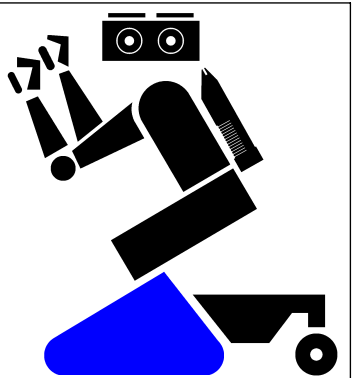
Material: Various

[TDRV-LEFT] Track Drive (Left)

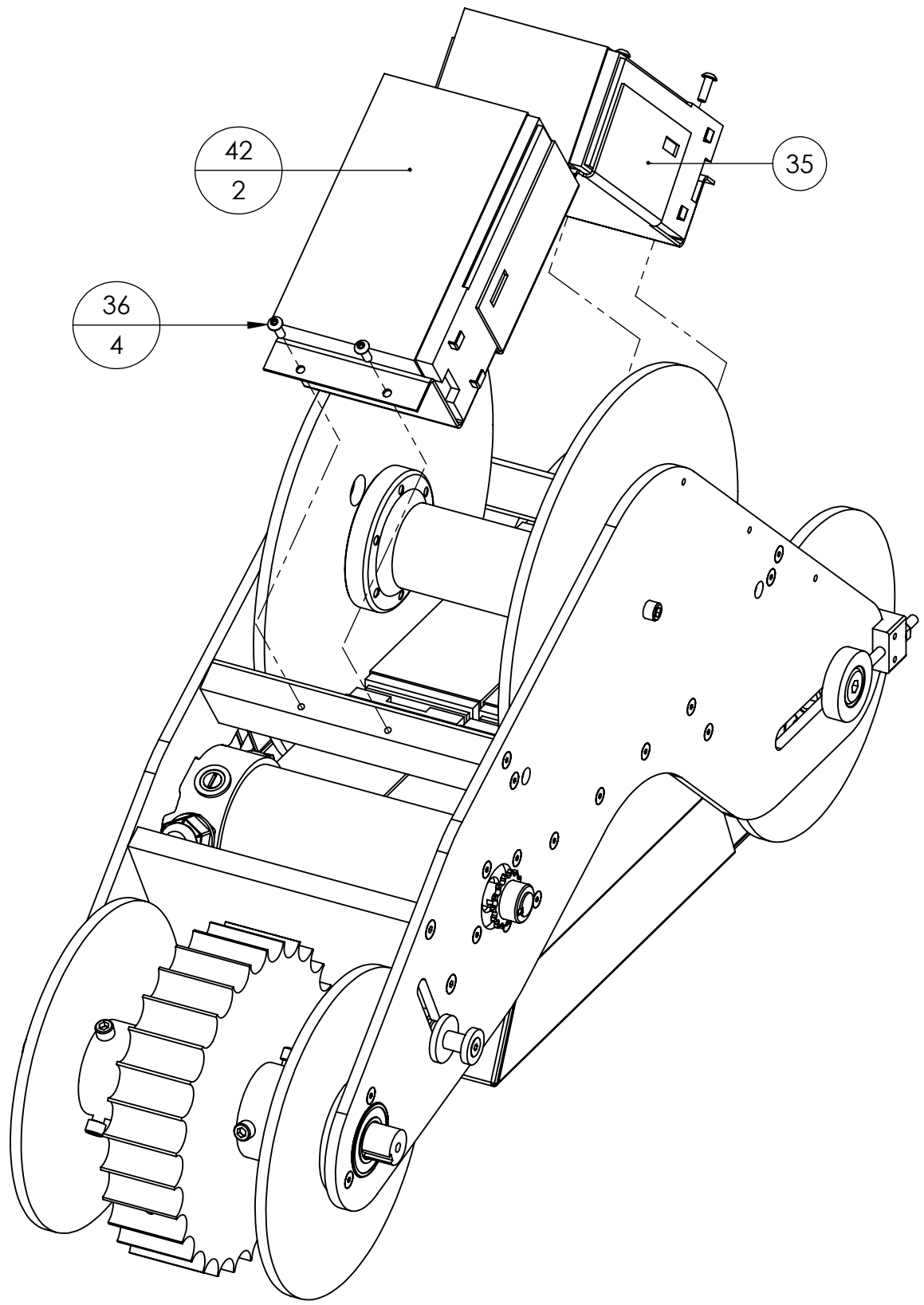
1 Required Per Robot

Dimensions in Inches

Sheet 15 of 20



Track Drive



Drawn	Andrew Friedberg	28/10/2011
	Part Last Saved On	09/07/2012
	Drawing Last Saved On	15/05/2012
Approved		

INPUT-INC

The completed left track drive unit.

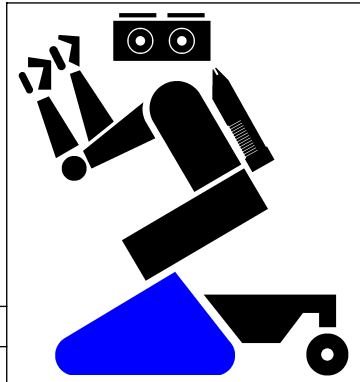
Material: Various

[TDRV-LEFT] Track Drive (Left)

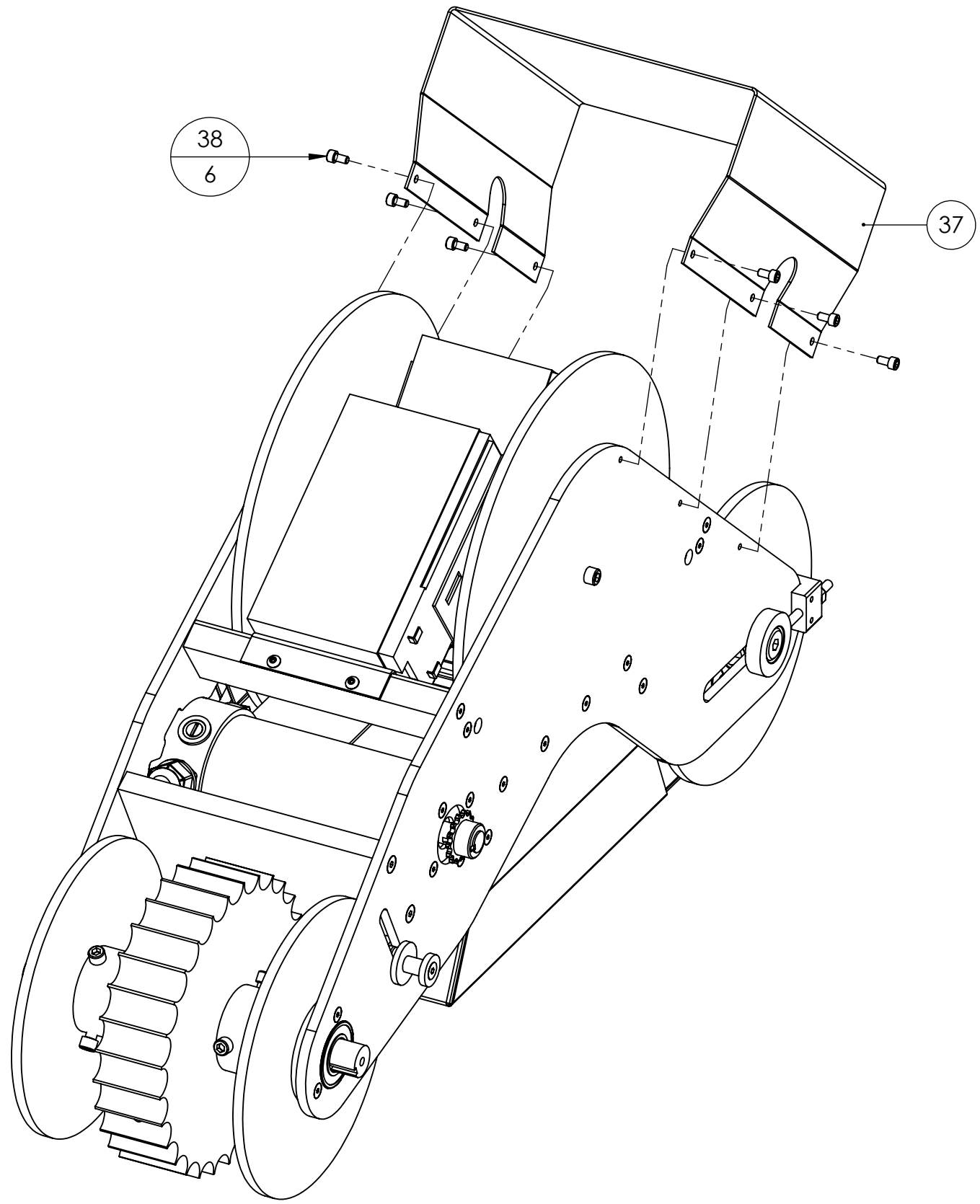
1 Required Per Robot

Dimensions in Inches

Sheet 16 of 20



Track Drive



Drawn	Andrew Friedberg	28/10/2011
	Part Last Saved On	09/07/2012
	Drawing Last Saved On	15/05/2012
Approved		

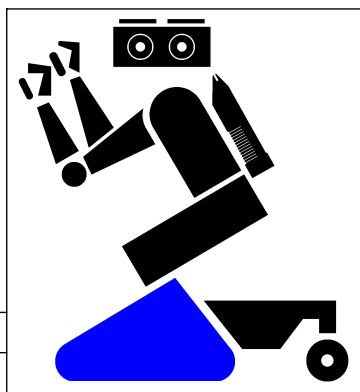


The completed left track drive unit.

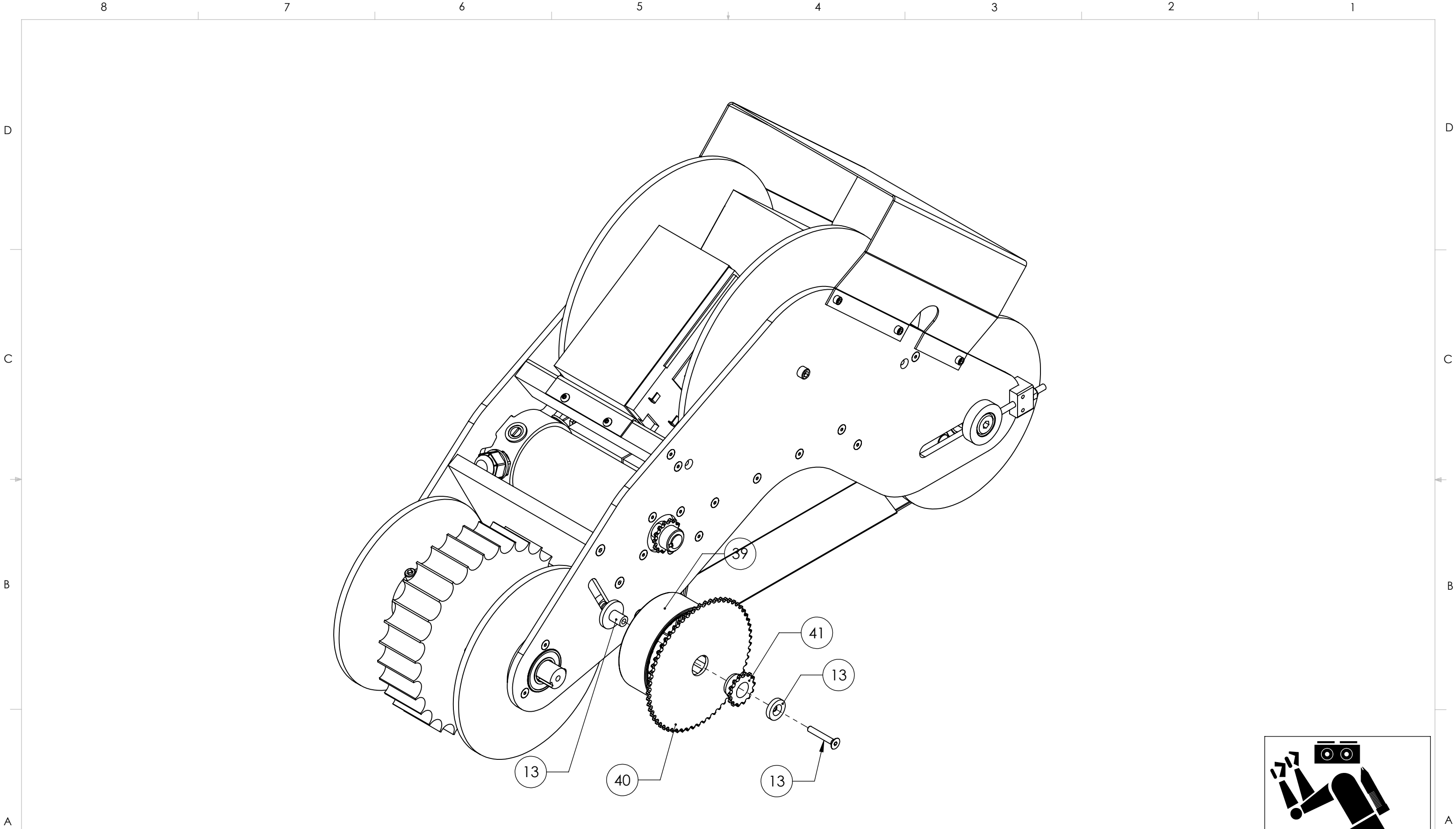
Material: Various

[TDRV-LEFT] Track Drive (Left)

1 Required Per Robot	Dimensions in Inches	Sheet 17 of 20
----------------------	----------------------	----------------



Track Drive



Drawn	Andrew Friedberg	28/10/2011
	Part Last Saved On	09/07/2012
	Drawing Last Saved On	15/05/2012
Approved		

INPUT-INC

The completed left track drive unit.

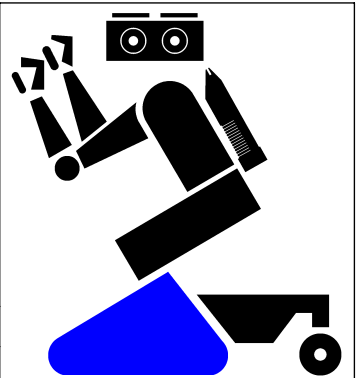
Material: Various

[TDRV-LEFT] Track Drive (Left)

1 Required Per Robot

Dimensions in Inches

Sheet 18 of 20



Track Drive

8										7										6										5										4										3										2										1																													
BILL OF MATERIALS																																																																																																			
ITEM NO.										PART NAME																														DESCRIPTION																																																		QTY.									
1										[TDRV-LEFT-A-OUTR-00] Side Plate (Left, Outer)																														Outer side plate for the left track drive.																																																		1									
2										[TDRV-LEFT-A-INNR-00] Side Plate (Left, Inner)																														Inner side plate for the left track drive.																																																		1									
3										[HDWR-BRNG-BALL-UK-S] 19 x 40 x 12 (6203-2RS3-4)																														Ball Bearing 19mm I.D. x 40mm O.D. x 12mm HT. (6203-2RS3/4)																																																		2									
4										[TDRV-COMN-E-OUTR-00] Bearing Cup (Outer)																														Holds and protects the drive gear bearings. Attaches to the inside of the outer side plate.																																																		1									
5										SCHCSCREW 0.164-32x0.5x0.5-HX-N																																																																																15									
6										[TDRV-COMN-E-INNR-00] Bearing Cup (Countersunk)																														Holds and protects the drive gear bearings. Attaches to the outside of the inner side plate.																																																		1									
7										[TDRV-COMN-E-INNR-01] Bearing Cup (Threaded)																														Holds and protects the drive gear bearings. Attaches to the inside of the inner side plate.																																																		1									
8										SCHCSCREW 0.164-32x0.625x0.625-HX-N																																																																																11									
9										[TDRV-COMN-F-COMN-00] Tension Adjustment Block																														Attaches to the rear of the side plates; used with the track tensioner assembly.																																																		2									
10										SCHCSCREW 0.164-32x0.75x0.75-HX-N																																																																																4									
11										[TDRV-COMN-A-00] Front Spacer																														The primary structural member of the track drive. Also isolates the front idler compartment.																																																		1									
12										SCHCSCREW 0.19-24x0.75x0.75-HX-N																																																																																6									
13										[TDRV-COMN-H] Idler Gear Shaft																														Interfaces with the outer side plate to provide the necessary gear reduction.																																																		1									
14										[TDRV-COMN-B] Front Idler																														Front 7" idler assembly. Contains drive gear.																																																		1									
15										[HRDW-MOTR-S28400-COMN-00] Body																														Magmotor S28-400 Body																																																		1									
16										Key B17.1 0.125x0.125x0.525																																																																																1									
17										[HRDW-GEAR] Martin 14-Tooth Sprocket (25B14)																														Martin 14-Tooth Sprocket (25B14, Magmotor S28-400 Modifications)																																																		1									
18										SCHCSCREW 0.164-32x0.875x0.875-HX-N																																																																																4									
19										[TDRV-COMN-06-OUTR] Wire Passthrough Plate (Outer)																														Protects wires that are run through the lengthwise slot of the inner side plate.																																																		1									
20										[TDRV-COMN-06-INNR] Wire Passthrough Plate (Inner)																														Protects wires that are run through the lengthwise slot of the inner side plate.																																																		1									
21										SBHCSCREW 0.164-32x0.25-HX-N																																																																																8									
22										[TDRV-COMN-A-01-FRNT] Cross Support (Front)																														Provides a mounting surface for the top battery box. Also functions as a structural member.																																																		1									
23										[TDRV-COMN-A-01-REAR] Cross Support (Rear)																														Provides a mounting surface for the top battery box. Also functions as a structural member.																																																		1									
24										[TDRV-COMN-G-00-LWR] Battery Box (Lower)																														Lower battery box. Can hold a maximum of six PS-1290 batteries.																																																		1									
25										MSHXNUT 0.164-32-S-N																																																																																12									
26										[TDRV-COMN-D] Rear Idler																														Rear 7" idler assembly.																																																		1									
27										[TDRV-COMN-F] Track Tensioner																														Interfaces with the rear idler assembly and tension block to adjust track tension or remove the tracks.																																																		2									
28										[HDWR-FSTR-NUT] NYHXNUT #10-24-D-S																														Nylock Hex Nut #10-24 (MCMC 90715A011)																																																		2									
29										[TDRV-COMN-04] Quick-Release Collar																														Allows removal of a track drive unit from the tiptoe tube via quick-release pins.																																																		1									
30										[TDRV-COMN-03] Quick-Release Collar Bushing																														Prevents scraping of metal between the cradle base and track drive.																																																		1									
31										HX-SHCS 0.25-20x0.75x0.75-N																																																																																6									
32										[HDWR-FSTR-PIN] HUYDTYQRPIN 1 x 0.25																														Heavy Duty Quick-Release Pin 1" x 1/4" DIA. (MCMC 95165A034, TDRV Modifications w/o Ring)																																																		6									
33										[TDRV-COMN-C] Top Idler																														Top 10" idler assembly.																																																		1									
34										HX-SHCS 0.25-20x1.25x1.25-N																																																																																2									
35										[TDRV-COMN-G-00-UPR] Battery Box (Upper)																														Upper battery box. Can hold a maximum of two PS-1290 batteries.																																																		1									
36										SBHCSCREW 0.164-32x0.5-HX-N																																																																																4									
37										[TDRV-COMN-05] Shield & Accessory Covering Mounting Plate																														Provides a mounting surface for various electronics and a couple coverings.																																																		1									
38										HX-SHCS 0.164-32x0.3125x0.3125-N																																																																																6									
39										needle roller bearing_nih_ai																																																																																1									
40										[HRDW-GEAR] Martin 60-Tooth Sprocket (25B60)																														Martin 60-Tooth Sprocket (25B60, TDRV Idler Gear Modifications)																																																		1									
41										[HRDW-GEAR] Martin 14-Tooth Sprocket (25B14)																														Martin 14-Tooth Sprocket (25B14, TDRV Idler Gear Modifications)																																																		1									
42										[ELEC-BATT-PS1290] PS-1290																														Power-Sonic PS-1290 12V 9Ah Battery																																																		8									
43										[TDRV-COMN-I] Track Assembly																														Track assembly; contains 45 Rexnord D821 track links and plastic pads.																																																		1									